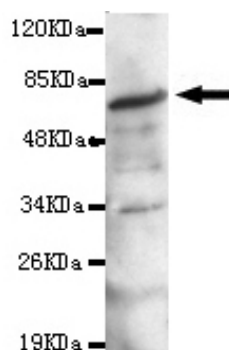




## PCK2 Antibody

**E220166**

<b>Catalog Number</b>	E220166-1, E220166-2
<b>Amount</b>	50µg/50µl, 100µg/100µl
<b>Description</b>	Mouse monoclonal IgG to PCK2
<b>GeneBank ID</b>	NM_004563.2
<b>Swizz-prot ID</b>	Q16822
<b>Immunogen</b>	Recombinant fragment of human PCK2 (C-terminus).
<b>Reacts with</b>	Human
<b>Application notes</b>	Recommended dilutions. ELISA: 1/5000 - 1/20000. WB: 1/100 - 1/2000.
<b>Cellular localization</b>	Mitochondrion
<b>Relevance</b>	This gene encodes a member of the phosphoenolpyruvate carboxykinase (GTP) family. The protein is a mitochondrial enzyme that catalyzes the conversion of oxaloacetate to phosphoenolpyruvate in the presence of GTP.
<b>Purity</b>	Protein G-Sepharose affinity purified.
<b>Storage buffer</b>	Preservative: 0.02% Sodium Azide and 50% glycerol, 1% BSA, PBS, pH7.4.
<b>Form</b>	Liquid
<b>Storage instructions</b>	Aliquot and store at -20°C. Avoid repeated freeze / thaw cycles.



PCK2 (C-terminus) antibody (E220166) at 1/1000 dilution + HeLa whole cell lysate 40ug/Lane. Predicted band size: 71KDa. Observed band size: 71KDa.

**For Research Use Only**