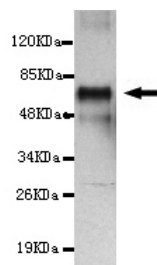




BRCA1 Antibody

E220168

Catalog Number	E220168-1, E220168-2
Amount	50µg/50µl, 100µg/100µl
Description	Mouse monoclonal IgG to BRCA1
GeneBank ID	NM_007294
Swizz-prot ID	P38398
Immunogen	Recombinant fragment of human BRCA1 (C-terminus).
Reacts with	Human
Application notes	Recommended dilutions. ELISA: 1/5000 - 1/20000. WB: 1/100 - 1/2000.
Cellular localization	Nucleus
Relevance	This gene encodes a nuclear phosphoprotein that plays a role in maintaining genomic stability, and it also acts as a tumor suppressor. Mutations in this gene are responsible for approximately 40% of inherited breast cancers and more than 80% of inherited breast and ovarian cancers.
Purity	Protein G-Sepharose affinity purified.
Storage buffer	Preservative: 0.02% Sodium Azide and 50% glycerol, 1% BSA, PBS, pH7.4.
Storage instructions	Aliquot and store at -20°C. Avoid repeated freeze / thaw cycles.



BRCA1 (C-terminus) antibody (E220168) at 1/1000 dilution + recombinant immunogen with a GST tag.
Predicted band size: 69KDa. Observed band size: 69KDa.

For Research Use Only