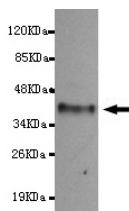




## ICAM1 Antibody

**E220169**

|                              |  |
|------------------------------|--|
| <b>Catalog Number</b>        | E220169-1, E220169-2   |
| <b>Amount</b>                | 50µg/50µl, 100µg/100µl   |
| <b>Description</b>           | Mouse monoclonal IgG to ICAM1  |
| <b>GeneBank ID</b>           | NM000201.1   |
| <b>Swizz-prot ID</b>         | P05362   |
| <b>Immunogen</b>             | Recombinant fragment of human ICAM1 (N-terminus).  |
| <b>Reacts with</b>           | Human  |
| <b>Application notes</b>     | Recommended dilutions. ELISA: 1/5000 - 1/20000. WB: 1/100 - 1/2000.  |
| <b>Cellular localization</b> | Plasma membrane  |
| <b>Relevance</b>             | This gene encodes a cell surface glycoprotein which is typically expressed on endothelial cells and cells of the immune system. It binds to integrins of type CD11a / CD18, or CD11b / CD18 and is also exploited by Rhinovirus as a receptor. |
| <b>Purity</b>                | Protein G-Sepharose affinity purified.   |
| <b>Storage buffer</b>        | Preservative: 0.02% Sodium Azide and 50% glycerol, 1% BSA, PBS, pH7.4.   |
| <b>Form</b>                  | Liquid   |
| <b>Storage instructions</b>  | Aliquot and store at -20°C. Avoid repeated freeze / thaw cycles.   |



ICAM1 (N-terminus) antibody (E220169) at 1/1000 dilution + recombinant immunogen with a DsbA tag.  
Predicted band size: 39KDa. Observed band size: 39KDa.

**For Research Use Only**