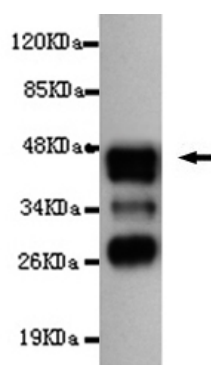




## ATG3 Antibody

**E220175**

<b>Catalog Number</b>	E220175-1, E220175-2
<b>Amount</b>	50µg/50µl, 100µg/100µl
<b>Description</b>	Mouse monoclonal IgG to ATG3
<b>GeneBank ID</b>	NM_022488.3
<b>Swiss-prot ID</b>	Q9NT62
<b>Immunogen</b>	Recombinant fragment of human ATG3 (N-terminus).
<b>Reacts with</b>	Human
<b>Application notes</b>	Recommended dilutions. ELISA: 1/5000 - 1/20000. WB: 1/100-1/2000.
<b>Cellular localization</b>	Cytoplasm
<b>Relevance</b>	Autophagy is a process of bulk degradation of cytoplasmic components by the lysosome or vacuole. Human ATG3 displays the same enzymatic characteristics in vitro as yeast Apg3, a protein-conjugating enzyme essential for autophagy.
<b>Purity</b>	Protein G-Sepharose affinity purified.
<b>Storage buffer</b>	Preservative: 0.02% Sodium Azide and 50% glycerol, 1% BSA, PBS, pH7.4.
<b>Form</b>	Liquid
<b>Storage instructions</b>	Aliquot and store at -20°C. Avoid repeated freeze / thaw cycles.



ATG3 (N-terminus) antibody (E220175) at 1/1000 dilution + recombinant immunogen with a DsbA tag.  
Predicted band size: 47kDa. Observed band size: 47kDa. Additional band size: 36kDa, 30kDa.

**For Research Use Only**