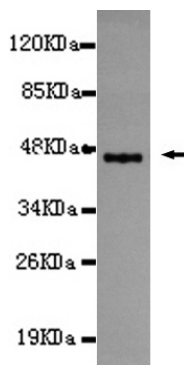




AMY1C Antibody

E220178

Catalog Number	E220178-1, E220178-2
Amount	50µg/50µl, 100µg/100µl
Description	Mouse monoclonal IgG to AMY1C
GeneBank ID	NM_001008219.1
Swiss-prot ID	P04745
Immunogen	Recombinant fragment of human AMY1C (C-terminus).
Reacts with	Human
Application notes	Recommended dilutions. ELISA: 1/5000 - 1/20000. WB: 1/100-1/2000.
Cellular localization	Secreted
Relevance	Amylases are secreted proteins that hydrolyze 1,4-alpha-glucoside bonds in oligosaccharides and polysaccharides, and thus catalyze the first step in digestion of dietary starch and glycogen. The human genome has a cluster of several amylase genes that are expressed at high levels in either salivary gland or pancreas. This gene encodes an amylase isoenzyme produced by the salivary gland.
Purity	Protein G-Sepharose affinity purified.
Storage buffer	Preservative: 0.02% Sodium Azide and 50% glycerol, 1% BSA, PBS, pH7.4.
Storage instructions	Aliquot and store at -20°C. Avoid repeated freeze / thaw cycles.



AMY1C (C-terminus) antibody (E220178) at 1/1000 dilution + recombinant immunogen with a DsbA tag.
Predicted band size: 45KDa. Observed band size: 45KDa.

For Research Use Only