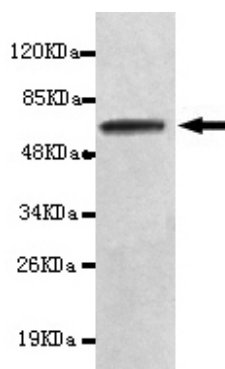




ASXL2 Antibody

E220188

| | |
|------------------------------|---|
| Catalog Number | E220188-1, E220188-2 |
| Amount | 50µg/50µl, 100µg/100µl |
| Description | Mouse monoclonal IgG to ASXL2 |
| GeneBank ID | NM_018263 |
| Swiss-prot ID | Q76L83 |
| Immunogen | Recombinant fragment of human ASXL2(C-terminus). |
| Reacts with | Human |
| Application notes | Recommended dilutions. ELISA: 1/5000 - 1/20000. WB: 1/100-1/2000. |
| Cellular localization | Secreted |
| Relevance | ASXL2 is a human homolog of the Drosophila asx gene. Drosophila asx is an enhancer of trithorax and polycomb gene that encodes a chromatin protein with dual functions in transcriptional activation and silencing. |
| Purity | Protein G-Sepharose affinity purified. |
| Storage buffer | Preservative: 0.02% Sodium Azide and 50% glycerol, 1% BSA, PBS, pH7.4. |
| Form | Liquid |
| Storage instructions | Aliquot and store at -20°C. Avoid repeated freeze / thaw cycles. |



ASXL2 antibody (E220188) at 1/2000 dilution + recombinant immunogen with a GST tag. Predicted band size: 60 kDa. Observed band size: 60 kDa.

For Research Use Only