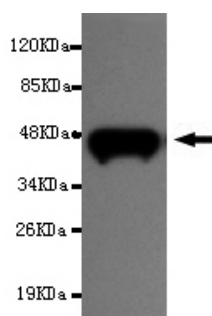




## LEO1 Antibody

**E220189**

<b>Catalog Number</b>	E220189-1, E220189-2
<b>Amount</b>	50µg/50µl, 100µg/100µl
<b>Description</b>	Mouse monoclonal IgG to LEO1
<b>GeneBank ID</b>	NM_138792
<b>Swiss-prot ID</b>	Q8WVC0
<b>Immunogen</b>	Recombinant fragment of human LEO1(N-terminus).
<b>Reacts with</b>	Human
<b>Application notes</b>	Recommended dilutions. ELISA: 1/5000 - 1/20000. WB: 1/100-1/2000.
<b>Cellular localization</b>	Nucleus
<b>Relevance</b>	The PAF1 complex is a multifunctional complex. The PAF1 complex interacts with POLR2A. May be involved in both initiation and elongation, histone methylation and RNA processing. Overexpression of LEO1 induces cell growth arrest and premature senescence of fibroblasts.
<b>Purity</b>	Protein G-Sepharose affinity purified.
<b>Storage buffer</b>	Preservative: 0.02% Sodium Azide and 50% glycerol, 1% BSA, PBS, pH7.4.
<b>Form</b>	Liquid
<b>Storage instructions</b>	Aliquot and store at -20°C. Avoid repeated freeze / thaw cycles.



Leo1 antibody (E220189) at 1/1000 dilution + recombinant immunogen with a GST tag. Predicted band size:46KDa. Observed band size:46KDa.

**For Research Use Only**