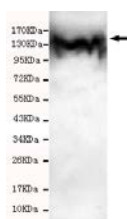




## FLK1 Antibody

**E220193**

<b>Catalog Number</b>	E220193-1, E220193-2
<b>Amount</b>	50µg/50µl, 100µg/100µl
<b>Description</b>	Mouse monoclonal IgG to FLK1
<b>GeneBank ID</b>	NM_002253.2
<b>Entrez Gene ID</b>	3791
<b>Swiss-prot ID</b>	P35968
<b>Immunogen</b>	Recombinant fragment of human FLK1(C-terminus).
<b>Reacts with</b>	Human
<b>Application notes</b>	Recommended dilutions. ELISA: 1/5000 - 1/20000. WB: 1/100-1/2000.
<b>Cellular localization</b>	Membrane
<b>Relevance</b>	This gene encodes one of the two receptors of the VEGF. This receptor, known as kinase insert domain receptor, is a type III receptor tyrosine kinase. It functions as the main mediator of VEGF-induced endothelial proliferation, survival, migration, tubular morphogenesis and sprouting.
<b>Purity</b>	Protein G-Sepharose affinity purified
<b>Storage buffer</b>	Preservative: 0.02% Sodium Azide and 50% glycerol, 1% BSA, PBS, pH7.4.
<b>Form</b>	Liquid
<b>Storage instructions</b>	Aliquot and store at -20°C. Avoid repeated freeze / thaw cycles.



FLK1 antibody (E220193) at 1/1000 dilution +Hela whole cell lysate 40ug/Lane. Predicted band size:152KDa. Observed band size:130KDa.

**For Research Use Only**