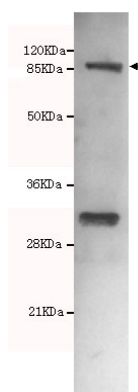




## TLR2 Antibody

**E230003**

<b>Catalog Number</b>	E230003-1, E230003-2
<b>Amount</b>	50µg/50µl, 100µg/100µl
<b>Description</b>	Rabbit polyclonal IgG to TLR2
<b>GeneBank ID</b>	NM_003264.3
<b>Immunogen</b>	Synthetic peptide corresponding to N-terminus amino acids of human TLR2 protein.
<b>Reacts with</b>	Hu
<b>Tested applications</b>	Recommended dilutions. ELISA: 1/5000 - 1/20000. WB: 1/800 - 1/2000.
<b>Cellular localization</b>	Plasma membrane
<b>Relevance</b>	This protein is a member of the Toll like receptor (TLR) family which plays a fundamental role in pathogen recognition and activation of innate immunity. TLRs are highly conserved from Drosophila to humans and share structural and functional similarities. The various TLRs exhibit different patterns of expression. This gene is expressed most abundantly in peripheral blood leukocytes, and mediates host response to Gram positive bacteria and yeast via stimulation of NF kappa B.
<b>Purity</b>	Protein G-Sepharose affinity purified
<b>Storage buffer</b>	Preservative: 0.02% Sodium Azide and 50% glycerol, 1% BSA, PBS, pH7.4.
<b>Form</b>	Liquid
<b>Storage instructions</b>	Aliquot and store at -20°C. Avoid repeated freeze / thaw cycles.



TLR2 antibody (E230003) at 1/800 dilution interacts with Hela whole cell lysate 40ug. Predicted band size: 90KDa. Observed band size: 90KDa.

**For Research Use Only**