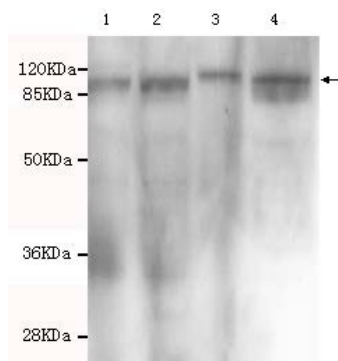




KDM1 Antibody

E230004

Catalog Number	E230004-1, E230004-2
Amount	50µg/50µl, 100µg/100µl
Description	Rabbit polyclonal IgG to KDM1
GeneBank ID	NM_001009999
Immunogen	Recombinant fragment of human KDM1 (N-terminus).
Reacts with	Hu
Tested applications	Recommended dilutions. ELISA: 1/5000 - 1/20000. WB: 1/800 - 1/2000.
Cellular localization	Nucleus
Relevance	Lysine specific demethylase 1 (KDM1 / LSD1) is a long-sought histone demethylase that specifically demethylates mono and di methyl histone H3 at K4 and K9. Thus KDM1 is a specific tag for epigenetic transcriptional activation, thereby acting as a corepressor. KDM1 is part of a histone deacetylase complex that contains HDAC1, HDAC2, AOF2, RCOR1, ZNF261, ZNF198, KIAA0182 and GTF2I.
Purity	Protein G-Sepharose affinity purified.
Storage buffer	Preservative: 0.02% Sodium Azide and 50% glycerol, 1% BSA, PBS, pH7.4.
Form	Liquid
Storage instructions	Aliquot and store at -20°C. Avoid repeated freeze / thaw cycles.



KDM1 / LSD1 antibody (E230004) at 1/800 dilution. Lane 1: Hela whole cell lysate 40ug/Lane. Lane 2: Hela whole cell lysate 40ug/Lane. Lane 3: Jukart whole cell lysate 40ug/Lane. Lane 4: MCF7 whole cell lysate 35ug/Lane. Predicted band size: 93KDa. Observed band size: 93KDa.

For Research Use Only