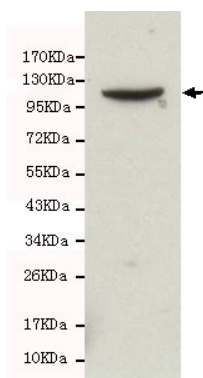




KDM4A Antibody

E230009

Catalog Number	E230009-1, E230009-2
Amount	50µg/50µl, 100µg/100µl
Description	Rabbit polyclonal IgG to KDM4A
GeneBank ID	NM_014663.2
Immunogen	Recombinant fragment of Human KDM4A (C-terminus).
Reacts with	Hu
Tested applications	Recommended dilutions. ELISA: 1/5000 - 1/20000. WB: 1/2000 - 1/10000.
Cellular localization	Nucleus
Relevance	This gene is a member of the Jumonji domain 2 (JMJD2) family and encodes a protein containing a JmjN domain, a JmjC domain, a JD2H domain, two TUDOR domains, and two PHD-type zinc fingers. This nuclear protein functions as a trimethylation-specific demethylase, converting specific trimethylated histone residues to the dimethylated form, and as a transcriptional repressor.
Purity	Protein G-Sepharose affinity purified.
Storage buffer	Preservative: 0.02% Sodium Azide and 50% glycerol, 1% BSA, PBS, pH7.4.
Form	Liquid
Storage instructions	Aliquot and store at -20°C. Avoid repeated freeze / thaw cycles.



KDM4A antibody (E230009) at 1/2000 dilution interacts with HeLa NE lysate 40ug. Predicted band size: 120Kda. Observed band size: 120Kda.

For Research Use Only