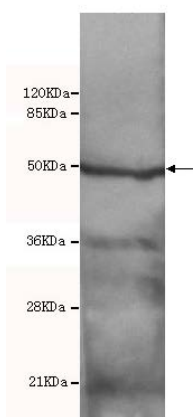




HAT1 Antibody

E230010

Catalog Number	E230010-1, E230010-2
Amount	50µg/50µl, 100µg/100µl
Description	Rabbit polyclonal IgG to HAT1
GeneBank ID	NM_003642
Immunogen	Recombinant fragment of human HAT1 (N-terminus).
Reacts with	Hu
Tested applications	Recommended dilutions. ELISA: 1/5000 - 1/20000. WB: 1/3000 - 1/10000.
Cellular localization	Nucleus and Cytoplasm
Relevance	KAT1 / HAT1 is a histone acetyl transferase that is comprised of the 46kDa catalytic KAT1 and the accessory p46. KAT1 is known to acetylate histone H4 at K5 and K12.
Purity	Protein G-Sepharose affinity purified
Storage buffer	Preservative: 0.02% Sodium Azide and 50% glycerol, 1% BSA, PBS, pH7.4.
Form	Liquid
Storage instructions	Aliquot and store at -20°C. Avoid repeated freeze / thaw cycles.



HAT1 antibody (E230010) at 1/3000 dilution interacts with 293 whole cell lysate 40ug. Predicted band size: 50Kda. Observed band size: 50Kda.

For Research Use Only