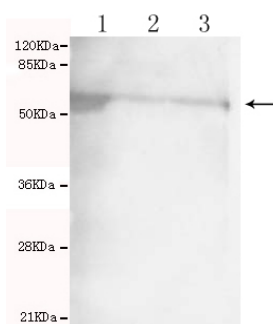




HSF2 Antibody

E230011

Catalog Number	E230011-1, E230011-2
Amount	50µg/50µl, 100µg/100µl
Description	Rabbit polyclonal IgG to HSF2
GeneBank ID	NM_004506
Immunogen	Synthetic peptide corresponding to N-terminus amino acids of human HSF2.
Reacts with	Hu
Tested applications	Recommended dilutions. ELISA: 1/5000 - 1/20000. WB: 1/5000 - 1/10000.
Cellular localization	Cytoplasm, Nuclear
Relevance	HSF2, as well as the related gene HSF1, encodes a protein that binds specifically to the heat shock element and has homology to HSFs of other species. Heat shock transcription factors activate heat shock response genes under conditions of heat or other stresses. Although the names HSF1 and HSF2 were chosen for historical reasons, these peptides should be referred to as heat shock transcription factors.
Purity	Protein G-Sepharose affinity purified.
Storage buffer	Preservative: 0.02% Sodium Azide and 50% glycerol, 1% BSA, PBS, pH7.4.
Form	Liquid
Storage instructions	Aliquot and store at -20°C. Avoid repeated freeze / thaw cycles.



HSF2 antibody (E230011) at 1/5000 dilution. Lane 1: Mouse brain lysate 40ug/Lane. Lane 2: 293T whole cell lysate 40ug/Lane. Lane 3: Hela whole cell lysate 40ug/Lane. Predicted band size: 60KDa. Observed band size: 60KDa.

For Research Use Only