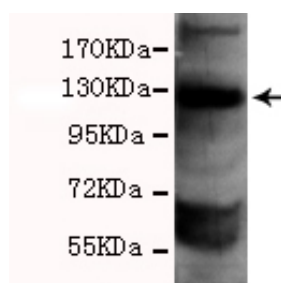




PARP1 Antibody

E230014

Catalog Number	E230014-1, E230014-2
Amount	50µg/50µl, 100µg/100µl
Description	Rabbit polyclonal IgG to PARP1
GeneBank ID	NM_020367.4
Immunogen	Synthetic peptide corresponding to C-terminus amino acids of PARP1 human protein.
Reacts with	Hu
Tested applications	Recommended dilutions. ELISA: 1/5000 - 1/20000. WB: 1/5000 - 1/10000.
Cellular localization	Nucleus
Relevance	PARP (Poly (ADP-ribose) polymerase) is a 113 kDa nuclear protein which can exist as a homo- or hetero-dimer, and is strongly activated by DNA strand breaks. This protein acts as a molecular "nick sensor" and functions in base excision repair, poly(ADPribose)ylation of acceptor proteins involved in chromatin architecture and DNA metabolism, and participates in protein modification to enhance or repress transcription. PARP is ribosylated by PARP2, and during apoptosis, ICE family members, such as caspase 3 and 7, cleave PARP to yield an 85 kDa and a 25 kDa fragment.
Purity	Protein G-Sepharose affinity purified.
Storage buffer	Preservative: 0.02% Sodium Azide and 50% glycerol, 1%BSA, PBS, pH7.4.
Form	Liquid
Storage instructions	Aliquot and store at -20°C. Avoid repeated freeze / thaw cycles.



PARP antibody (E230014) at 1/5000 dilution interacts with 293T whole cell lysate 40ug/Lane. Predicted band size: 113kDa. Observed band size: 113kDa. Additional band size: 200kDa, 70kDa.

For Research Use Only