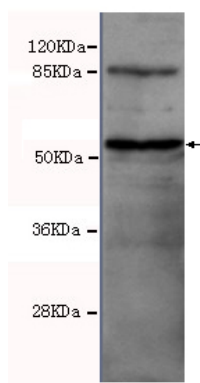




## Thrb Antibody

**E230017**

<b>Catalog Number</b>	E230017-1, E230017-2
<b>Amount</b>	50µg/50µl, 100µg/100µl
<b>Description</b>	Rabbit polyclonal IgG to Thrb
<b>GeneBank ID</b>	NM_001128177.1
<b>Immunogen</b>	Full length recombinant protein of human Thrb.
<b>Reacts with</b>	Hu
<b>Tested applications</b>	Recommended dilutions. ELISA: 1/5000 - 1/20000. WB: 1/500 - 1/2000.
<b>Cellular localization</b>	Nucleus, Cytoplasm
<b>Relevance</b>	The Thyroid Hormone Receptor Beta protein is a nuclear hormone receptor for triiodothyronine. It has been shown to mediate the biological activities of, and is one of the several receptors for thyroid hormone. The beta receptor activates expression of several genes known to be important in brain development, implicating it in the well characterised effects of thyroid hormones on development of the fetal and neonatal brain.
<b>Purity</b>	Protein G-Sepharose affinity purified.
<b>Storage buffer</b>	Preservative: 0.02% Sodium Azide and 50% glycerol, 1% BSA, PBS, pH7.4.
<b>Form</b>	Liquid
<b>Storage instructions</b>	Aliquot and store at -20°C. Avoid repeated freeze / thaw cycles.



Thrb Thyroid Hormone Receptor beta antibody (E230017) at 1/500 dilution interacts with Hela whole cell lysate 40ug. Predicted band size: 52kDa. Observed band size: 55kDa.

**For Research Use Only**