



TOP2B Antibody

E300025a

Product description:

Formulation: Lyophilized rabbit anti-TOP2B purified by peptide affinity column containing 2% BSA and 0.02% NaN₃

Catalog No.: E300025a

Size: 100ug/200ul

Source:

Rabbit polyclonal TOP2B ⁽¹⁾ antibody was raised against a 15 amino acid peptide from near the C terminal residues of human TOP2B.

Species Reactivity:

Human

Not yet tested in other species.

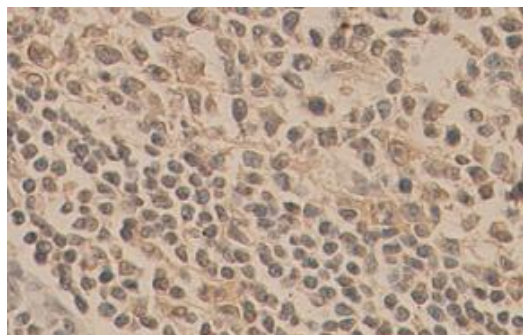
Application:

For research use only

Peptide ELISA titer: 1:50,000-1:20,000

Immunohistochemistry: 1:50-200

Optimal dilutions/concentrations should be determined by the end user.



Immunohistochemical staining of formalin-fixed paraffin-embedded fetal tissue showing cytoplasmic and nuclear staining with anti-TOP2B antibody at a dilution of 1/100.

Dilution instruction and storage:

Already reconstituted in 200ul sterile H₂O. The antibody is stable for at least one year when stored at -20°C after reconstitution.

Avoid repeated freeze/thaw cycles.

Reference:

(1) Mirski, S.E., Sparks, K.E., Friedrich, B et al. Topoisomerase II binds importin alpha isoforms and exportin/CRM1 but does not shuttle between the nucleus and cytoplasm in Proliferating cells. Exp Cell Res. 2007;313(3):627-37.

For Research Use Only