



PDCD6 Antibody

E300030a

Product description:

Formulation: Lyophilized anti-PDCD6 antibody purified by peptide affinity column containing 2% BSA and 0.02% NaN₃

Catalog No.: E300030a

Size: 100ug/200ul

Source:

Rabbit polyclonal PDCD6 ⁽¹⁾ antibody was raised against a 15 amino acid peptide from the intermediae residues of human PDCD6

Species Reactivity:

Human,mus

Not yet tested in other species.

Application:

For research use only

Peptide ELISA titer: 1:1,000-10,000

Immunohistochemistry: 1:50-200

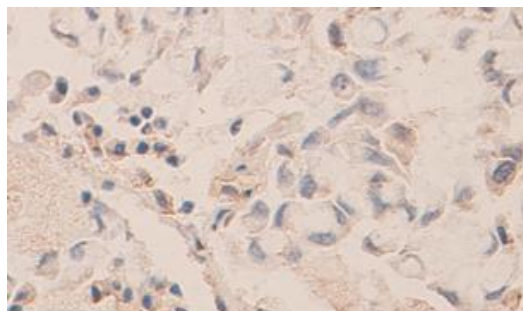
Immunofluorescence: 1:50-100

Optimal dilutions/concentrations should be determined by the end use

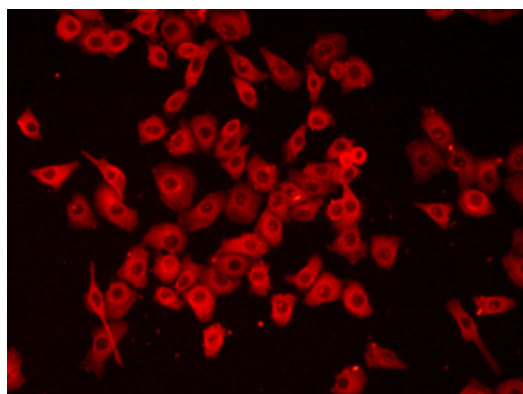
Dilution instruction and storage:

Already reconstituted in 200ul sterile H₂O. The antibody is stable for at least one year when stored at -20°C after reconstitution.

Avoid repeated freeze/defrost cycles.



Immunohistochemical staining of formalin-fixed paraffin-embedded lung carcinoma showing membrane and nuclear staining with anti-PDCD6 antibody dilution: 1:100.



Immunofluorescent staining of HeLa cells showing membrane and Nuclear staining with anti- PDCD6 antibody at a dilution of 1/100

Reference:

(1) Yamasaki,A., Tani,K., Yamamoto,A et,al
The Ca²⁺-binding protein ALG-2 is recruited to endoplasmic reticulum exit sites by Sec31A and stabilizes the localization of Sec31A. 2006,17(11), 4876-4887.

For Research Use Only

SAIER BIOTECHNOLOGY

Phone: +86-22-66211462
Web: www.Saierbio.com

SAIER BIOTHCHNOLOGY INC

Fax: +86-22-66200849
Email: info@saierbio.com