



TGF beta1 Antibody

E3000050

Product description:

Formulation: Lyophilized anti-TGF beta 1 antibody purified by protein A column containing 0.02% NaN₃
Catalog No.: E300050
Size: 100ug/200ul

Source:

Rabbit polyclonal TGF beta1⁽¹⁾ antibody was raised against a 120 amino acid recombinant protein at the N terminal of human TGF beta1 protein.

Species Reactivity:

Human, mus, rat

Not yet tested in other species.

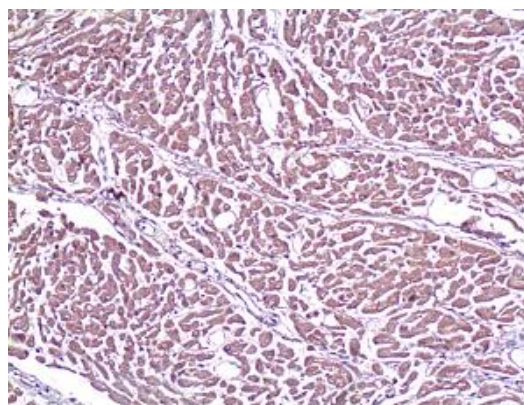
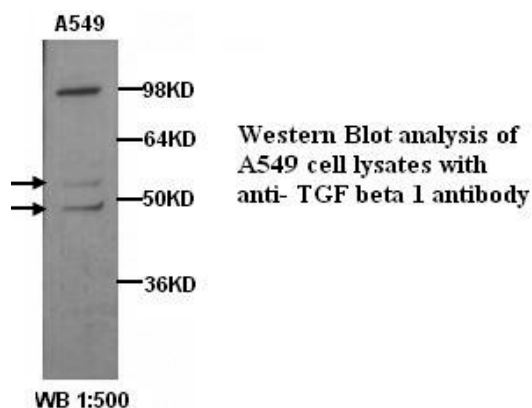
Application:

For research use only

Peptide ELISA titer: 1:160,000

Western blot analysis: 1:200-1,000

Optimal dilutions/concentrations should be determined by the end use.



Immunohistochemical staining of formalin-fixed paraffin-embedded heart showing cytoplasmic staining with anti-TGF beta1 antibody dilution: 1:100

Dilution instruction and storage:

Already reconstituted in 200ul sterile H₂O. The antibody is stable for at least one year when stored at -20°C after reconstitution.

Avoid repeated freeze/thaw cycles.

Reference:

(1) Korff, T., Aufgebauer, K. and Hecker, M. Cyclic stretch controls the expression of CD40 in endothelial cells by changing their transforming growth factor-beta1 response. *Circulation*. 2007; 116 (20), 2288-2297.

For Research Use Only