



ECH1 Antibody

E300111

Product description:

Formulation: Lyophilized ECH1 antibody purified by protein A column containing 0.02% NaN₃

Catalog No.: E300111

Size: 100ug/200ul

Source:

Rabbit polyclonal ECH1 ⁽¹⁾ antibody was raised against a recombinant human ECH1 protein from 145-325aa (NM_001398).

Species Reactivity:

Human

Not yet tested in other species.

Application:

For research use only

ELISA titer: 1:10,000-1:80,000

Western blot analysis: 1:200-1:1,000

Immunohistochemistry: 1:50-200

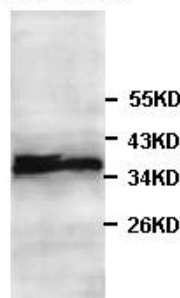
Optimal dilutions/concentrations should be determined by the end user.

Dilution instruction and storage:

Already reconstituted in 200ul sterile H₂O. The antibody is stable for at least one year when stored at -20°C after reconstitution.

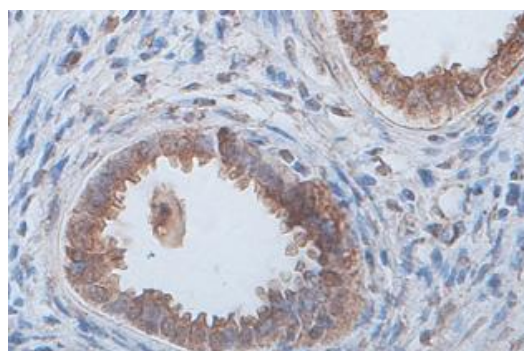
Avoid repeated freeze/thaw cycles.

HepG2 Jurkat



Western Blot analysis of HepG2 and Jurkat cell Lysate with anti-ECH1 antibody

WB 1:500



Immunohistochemical staining of formalin-fixed paraffin-embedded fetal kidney showing Cytoplasmic staining with anti- ECH1 antibody at a dilution of 1/100.

Reference:

(1) Goehler,H., Lalowski,M., Stelzl,U., et al.A protein interaction network links GIT1, an enhancer of huntingtin aggregation, to Huntington's disease Mol. Cell 15 (6), 853-865 (2004)

For Research Use Only