



CLIC1 Antibody

E300140

Product description:

Formulation: Lyophilized CLIC1 antibody purified by protein A column containing 0.02% NaN₃

Catalog No.: E300140

Size: 100ug/200ul

Source:

Rabbit polyclonal CLIC1⁽¹⁾ antibody was raised against a 14 amino acid peptide from near the N terminal residues of human CLIC1.

Species Reactivity:

Human

Not yet tested in other species.

Application:

For research use only

Peptide ELISA titer: 1:20,000-1:80,000

Western blot analysis: 1:200-1:500

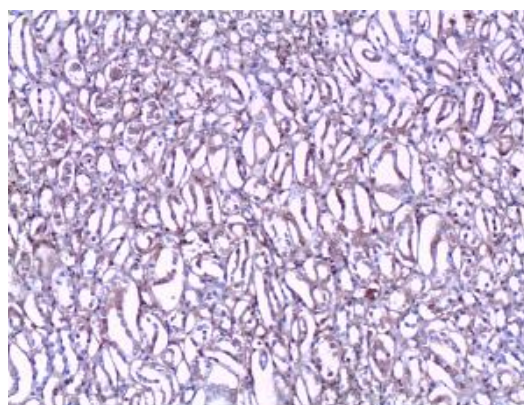
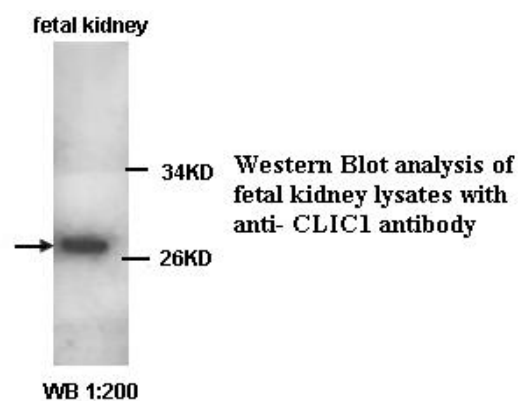
Immunohistochemistry: 1:50-1:250

Optimal dilutions/concentrations should be determined by the end user.

Dilution instruction and storage:

Already reconstituted in 200ul sterile H₂O. The antibody is stable for at least one year when stored at -20°C after reconstitution.

Avoid repeated freeze/thaw cycles.



Immunohistochemical staining of formalin-fixed paraffin-embedded kidney showing nuclear and cytoplasmic staining with anti-CLIC1 antibody dilution: 1:100

Reference:

(1) Guo,D., Han,J., Adam,B.L. et, al. Proteomic analysis of SUMO4 substrates in HEK293 cells under serum starvation-induced stress. Biochem Biophys Res Commun. 2005;337(4):1308-18.

For Research Use Only