



PSMC3 Antibody

E300158

Product description:

Formulation: Lyophilized PSMC3 antibody serum containing 0.02% NaN_3

Catalog No.: E300158

Size: 100ug

Antigen GeneBank No.: P17980

Source:

Rabbit polyclonal PSMC3⁽¹⁾ antibody was raised against a 14 amino acid peptide from the internal residues of human PSMC3

Species Reactivity:

Human

Not yet tested in other species.

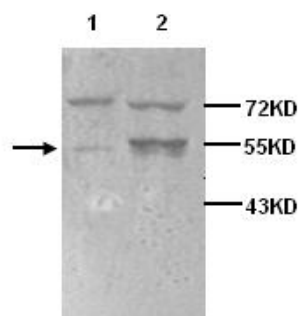
Application:

For research use only

Peptide ELISA titer: 1:80,000

Western blot analysis: 1:200-1,000

Optimal dilutions/concentrations should be determined by the end use



WB 1:50

Lane 1: 293 cell, non-transfected with PSMC3 gene

Lane 2: 293 cell, transfected with PSMC3 gene

Dilution instruction and storage:

Reconstitute in 200ul sterile H_2O .

The lyophilized antibody is stable for at least one year when stored at -20°C after reconstitution.

Avoid repeated freeze/thaw cycles.

Reference:

(1) Thompson, H.G., Harris, J.W. and Brody, J.P. Post-translationally modified S12, absent in transformed breast epithelial cells, is not associated with the 26S proteasome and is induced by proteasome inhibitor. International journal of cancer. 2004;111(3): 338-347.

For Research Use Only