



RBBP6 Antibody

E300160a

Product description:

Formulation: Lyophilized anti-RBBP6 antibody purified by peptide affinity column containing 2% BSA and 0.02% NaN₃

Catalog No.: E300160a

Size: 100ug

Antigen GeneBank No.: NP_035377.2|

Source:

Rabbit polyclonal RBBP6 ⁽¹⁾ antibody was raised against a peptide near the intermediate corresponding to the N terminus residues of human RBBP6.

Species Reactivity:

Human, mus

Not yet tested in other species.

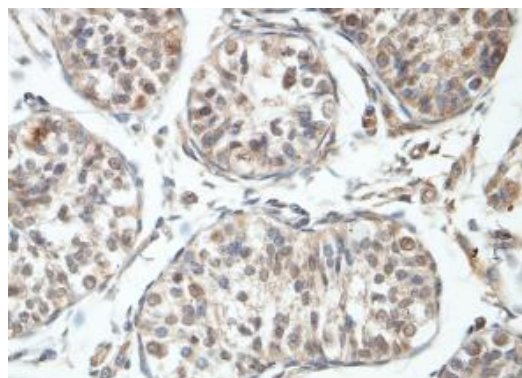
Application:

For research use only

Peptide ELISA titer: 1:10,000-1:80,000

Immunohistochemistry: 1:50-200

Optimal dilutions/concentrations should be determined by the end use



Immunohistochemical staining of formalin-fixed paraffin-embedded fetal testis showing nuclear staining with anti-RBBP6 antibody at a dilution of 1/100.

Dilution instruction and storage:

Reconstitute in 200ul sterile H₂O.

The lyophilized antibody is stable for at least one year when stored at -20°C after reconstitution.

Avoid repeated freeze/thaw cycles.

Reference:

(1) Chibi,M., Meyer,M., Skepu,A., et al.RBBP6 interacts with multifunctional protein YB-1 through its RING finger domain, leading to ubiquitination and proteosomal degradation of YB-1. J. Mol. Biol. 384 (4), 908-916 (2008)

For Research Use Only