



## RBBP6 Antibody

E300161

**Product description:**

Formulation: Lyophilized anti-RBBP6 antibody purified by peptide affinity column containing 1% BSA and 0.02% NaN<sub>3</sub>

Catalog No.: E300161

Size: 100ug/200ul

**Source:**

Rabbit polyclonal RBBP6<sup>(1)</sup> antibody was raised against a peptide near the intermediate corresponding to the N terminus residues of human RBBP6.

**Species Reactivity:**

Reacts with: Human

Predicted: mus, rat

Not yet tested in other species.

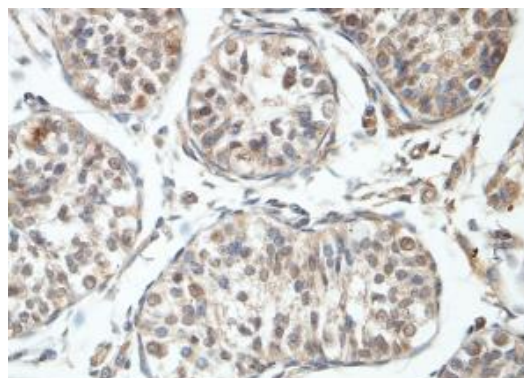
**Application:**

For research use only

Peptide ELISA titer: 1:20,000-1:80,000

Immunohistochemistry: 1:100-1:500

Optimal dilutions/concentrations should be determined by the end user.



Immunohistochemical staining of formalin-fixed paraffin-embedded fetal testis showing nuclear staining with anti-RBBP6 antibody at a dilution of 1/100.

**Dilution instruction and storage:**

Already reconstituted in 200ul sterile H<sub>2</sub>O. The antibody is stable for at least one year when stored at -20°C after reconstitution.

Avoid repeated freeze/thaw cycles.

**Reference:**

(1) Chibi, M., Meyer, M., Skepu, A., et al. RBBP6 interacts with multifunctional protein YB-1 through its RING finger domain, leading to ubiquitination and proteosomal degradation of YB-1. J. Mol. Biol. 384 (4), 908-916 (2008)

**For Research Use Only**