



## BRCA1 Antibody

E300173

**Product description:**

Formulation: Lyophilized  
BRCA1Antibody serum containing  
0.02% NaN<sub>3</sub>  
Catalog No.: E300173  
Size: 100ug  
Antigen GeneBank No.: P38398

**Source:**

Rabbit polyclonal BRCA1<sup>(1)</sup> antibody was raised against a 15 amino acid peptide from near the C terminal residues of human BRCA1. The peptide sequence: SDDPESDPSEDRAPE

**Species Reactivity:**

Human

Not yet tested in other species.

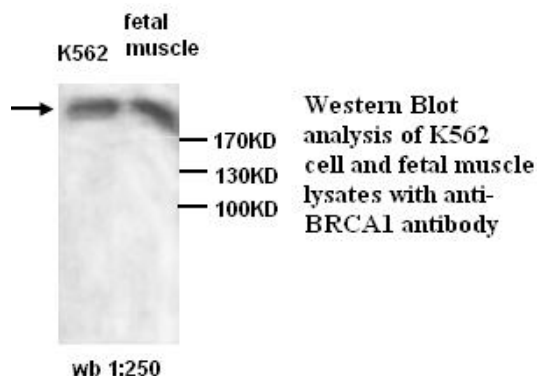
**Application:**

For research use only

Peptide ELISA titer: 1:10,000-1:40,000

Western blot analysis: 1:200-500

Optimal dilutions/concentrations should be determined by the end use

**Dilution instruction and storage:**

Reconstitute in 200ul sterile H<sub>2</sub>O.

The lyophilized antibody is stable for at least one year when stored at -20°C after reconstitution.

Avoid repeated freeze/thaw cycles.

**Reference:**

(1) Maor S, Papa MZ, Yarden RI, et al. Insulin-like growth factor-I controls BRCA1 gene expression through activation of transcription factor Sp1. Horm Metab Res. 2007 Mar;39(3):179-85.

**For Research Use Only**