



## RELA/P65 Antibody

E300224

**Product description:**

Formulation: Lyophilized RELA/P65

Antibody serum containing 0.02%  $\text{NaN}_3$

Catalog No.: E300224

Size: 100ug/200ul

**Source:**

Rabbit polyclonal RELA/P65 <sup>(1)</sup> antibody was raised against a 14 amino acid peptide from near the N terminal residues of human RELA/P65

**Species Reactivity:**

Human

Not yet tested in other species.

**Application:**

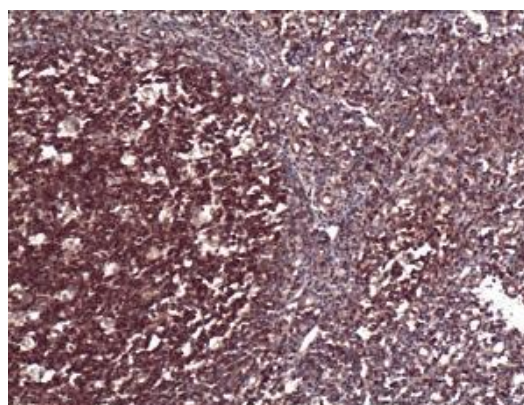
For research use only

Peptide ELISA titer: 1:20,000-1:80,000

Western blot analysis: 1:200-1,000

Immunohistochemistry: 1:50-250

Optimal dilutions/concentrations should be determined by the end user.



Immunohistochemical staining of formalin-fixed paraffin-embedded tonsil showing nuclear staining with anti-RELA/P65 antibody at a dilution of 1:100

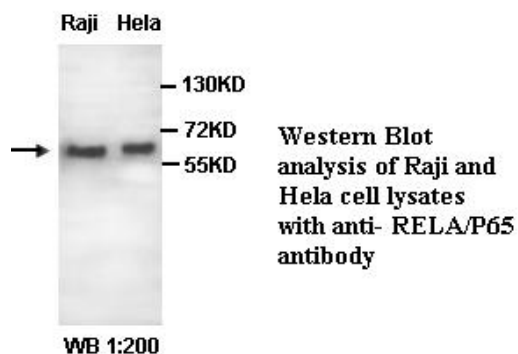
**Dilution instruction and storage:**

Already reconstituted in 200ul sterile  $\text{H}_2\text{O}$ . The antibody is stable for at least one year when stored at  $-20^\circ\text{C}$  after reconstitution.

Avoid repeated freeze/thaw cycles.

**Reference:**

(1)Ruben,S.M.,Narayanan,R.,Klement,J.F.et,al  
Functional characterization of the NF-kappa B p65 transcriptional activator and an alternatively spliced derivative.Mol Cell Biol. 1992 February; 12(2): 444-454.



**For Research Use Only**