



## CLIC1 Antibody

E300240

**Product description:**

Formulation: Lyophilized CLIC1 antibody purified by protein A column containing 0.02% NaN<sub>3</sub>

Catalog No.: E300240

Size: 100ug/200ul

**Source:**

Rabbit polyclonal CLIC1<sup>(1)</sup> antibody was raised against a 14 amino acid peptide from near the N terminal residues of human CLIC1.

**Species Reactivity:**

Human

Not yet tested in other species.

**Application:**

For research use only

Peptide ELISA titer: 1:20,000-1:80,000

Western blot analysis: 1:200-1:500

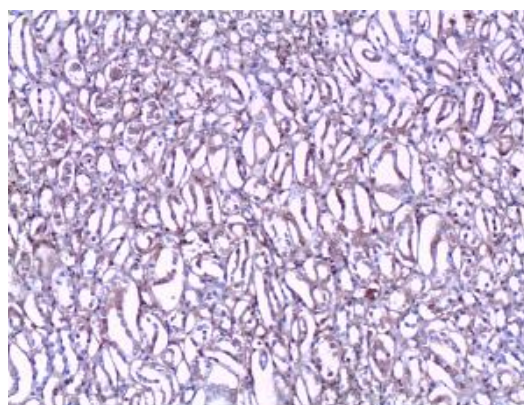
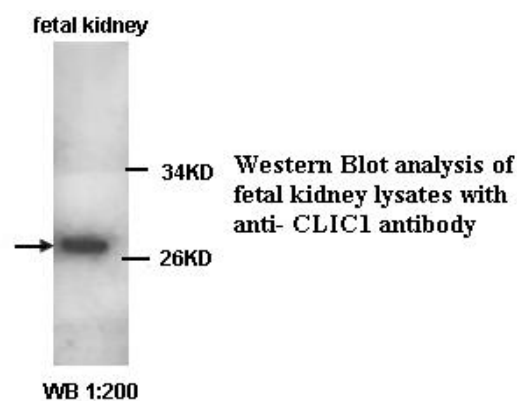
Immunohistochemistry: 1:50-1:250

Optimal dilutions/concentrations should be determined by the end user.

**Dilution instruction and storage:**

Already reconstituted in 200ul sterile H<sub>2</sub>O. The antibody is stable for at least one year when stored at -20°C after reconstitution.

Avoid repeated freeze/thaw cycles.



Immunohistochemical staining of formalin-fixed paraffin-embedded kidney showing nuclear and cytoplasmic staining with anti-CLIC1 antibody dilution: 1:100

**Reference:**

(1) Guo,D., Han,J., Adam,B.L. et, al. Proteomic analysis of SUMO4 substrates in HEK293 cells under serum starvation-induced stress. Biochem Biophys Res Commun. 2005;337(4):1308-18.

**For Research Use Only**