



## PAX2 Antibody

E300245

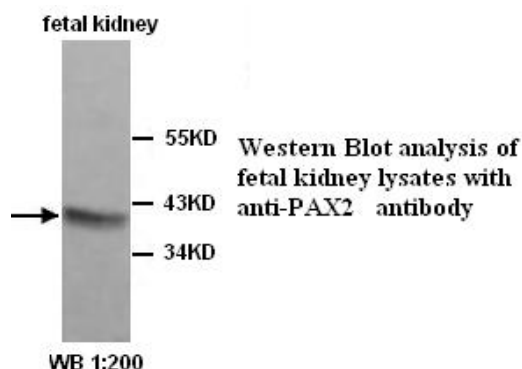
**PAX2 full name:** Paired box 2

**Product description:**

Formulation: Lyophilized anti-PAX2 Antibody purified by peptide affinity column containing 1% BSA and 0.02% NaN<sub>3</sub>

Catalog No.: E300245

Size: 100ug/200ul



**Source:**

Rabbit polyclonal PAX2<sup>(1)</sup> antibody was raised against a 14 amino acid peptide from near the C terminal residues of human PAX2 protein.

**Species Reactivity:**

Human

Not yet tested in other species.

**Dilution instruction and storage:**

Already reconstituted in 200ul sterile H<sub>2</sub>O. The antibody is stable for at least one year when stored at -20°C after reconstitution.

Avoid repeated freeze/thaw cycles.

**Application:**

For research use only

Peptide ELISA titer : 1:20,000-1:80,000

Western blot analysis: 1:200-1:500

Optimal dilutions/concentrations should be determined by the end user.

**Reference:**

(1) Eccles, M.R., Wallis, L.J., Fidler, A.E., et al. Expression of the PAX2 gene in human fetal kidney and Wilms' tumor. Cell Growth Differ. 1992;3(5):279-89.

**For Research Use Only**