



PAX2 Antibody

E300246

Product description:

Formulation: Lyophilized PAX2

Antibody serum containing 0.02% NaN₃

Catalog No.: E300246

Size: 100ug/200ul

Source:

Rabbit polyclonal PAX2⁽¹⁾ antibody was raised against a 14 amino acid peptide from the intermediate residues of human PAX2

Species Reactivity:

Human

Not yet tested in other species.

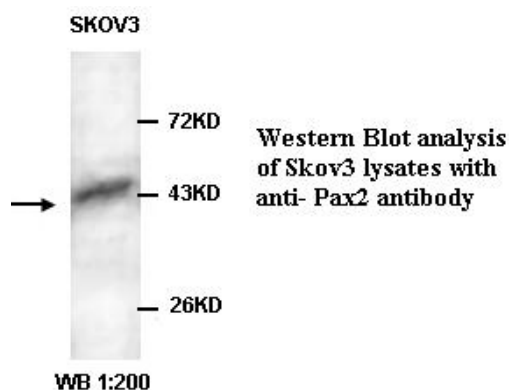
Application:

For research use only

Peptide ELISA titer: 1:20,000-1:80,000

Western blot analysis: 1:200-1,000

Optimal dilutions/concentrations should be determined by the end user.

**Dilution instruction and storage:**

Already reconstituted in 200ul sterile H₂O. The antibody is stable for at least one year when stored at -20°C after reconstitution.

Avoid repeated freeze/thaw cycles.

Reference:

(1) Hueber, P.A., Waters, P., Clark, P et al PAX2 inactivation enhances cisplatin-induced apoptosis in renal carcinoma cells. *Kidney international*. 2006; 69(7): 1139-1145.

For Research Use Only