



PAX6 Antibody

E300251

PAX6 full name: Paired box 6

Product description:

Formulation: Lyophilized PAX6 antibody purified by protein A column containing 0.02% NaN₃

Catalog No.: E300251

Size: 100ug/200ul

Source:

Rabbit polyclonal PAX6⁽¹⁾ antibody was raised against a 14 amino acid peptide at the intermediate residues of human PAX6 protein.

Species Reactivity:

Human, mus, rat

Not yet tested in other species.

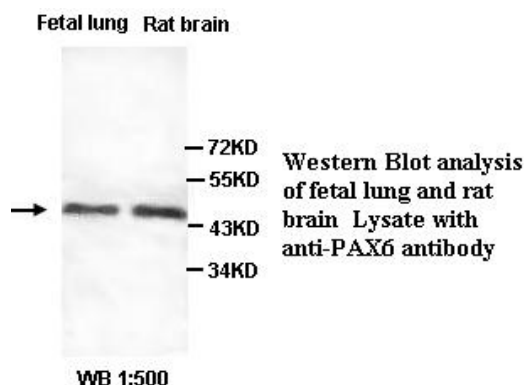
Application:

For research use only

Peptide ELISA titer: 1:20,000-1:80,000

Western blot analysis: 1:200-1,000

Optimal dilutions/concentrations should be determined by the end user.



Dilution instruction and storage:

Already reconstituted in 200ul sterile H₂O. The antibody is stable for at least one year when stored at -20°C after reconstitution.

Avoid repeated freeze/thaw cycles.

Reference:

(1) Manuel, M., Georgala, P.A., Carr, C.B., et al. Controlled overexpression of Pax6 in vivo negatively autoregulates the Pax6 locus, causing cell-autonomous defects of late cortical progenitor proliferation with little effect on cortical arealization. Development. 2007;134(3):545-55.

For Research Use Only