



## PARP11 Antibody

E300271

**Product description:**

Formulation: Lyophilized anti-PARP11 antibody purified by protein A column containing 0.02% NaN<sub>3</sub>

Catalog No.: E300271

Size: 100ug/200ul

**Source:**

Rabbit polyclonal PARP11<sup>(1)</sup> antibody was raised against a 15 amino acid peptide from near the C terminal residues of human PARP11.

**Species Reactivity:**

Human, mus, rat

Not yet tested in other species.

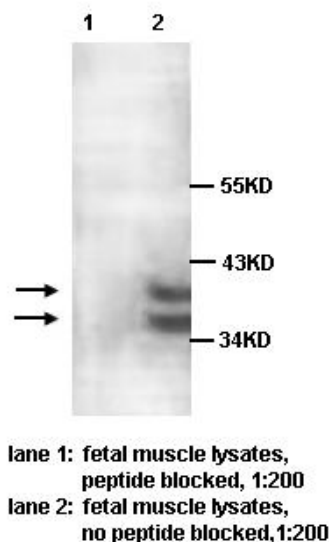
**Application:**

For research use only

Peptide ELISA titer: 1:10,000-1:40,000

Western blot analysis: 1:200-500

Optimal dilutions/concentrations should be determined by the end user.

**Dilution instruction and storage:**

Already reconstituted in 200ul sterile H<sub>2</sub>O. The antibody is stable for at least one year when stored at -20°C after reconstitution.

Avoid repeated freeze/thaw cycles.

**Reference:**

(1) Ame, J.C., Spence, C., de Murcia, G., et al. The PARP superfamily. *Bioessays*. 2004; 26(8): 882-893.

**For Research Use Only**