



RIPK2 Antibody

E300290a

Product description:

Formulation: Lyophilized anti-RIPK2 antibody by peptide affinity column containing 2% BSA and 0.02% NaN₃

Catalog No.: E300290a

Size: 100ug/200ul

Source:

Rabbit polyclonal RIPK2⁽¹⁾ antibody was raised against a 15 amino acid peptide from near the C terminal residues of human RIPK2.

Species Reactivity:

Human

Not yet tested in other species.

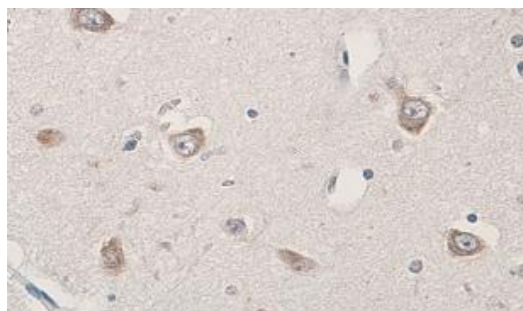
Application:

For research use only

Peptide ELISA titer: 1:40,000-1:80,000

Immunohistochemistry: 1:100-500

Optimal dilutions/concentrations should be determined by the end user.



Immunohistochemical staining of formalin-fixed paraffin-embedded brain showing Cytoplasmic staining with anti-RIP2 antibody dilution: 1:200.

Dilution instruction and storage:

Already reconstituted in 200ul sterile H₂O. The antibody is stable for at least one year when stored at -20°C after reconstitution.

Avoid repeated freeze/defrost cycles.

Reference:

(1) McCarthy, J.V., Ni, J. and Dixit, V.M. RIP2 is a novel NF-kappaB-activating and cell death-inducing kinase. J Biol Chem. 1998;273(27):16968-75.

For Research Use Only