



## RIPK2 Antibody

E300290s

**Product description:**

Formulation: Lyophilized RIPK2 antibody serum containing 0.02% NaN<sub>3</sub>

Catalog No.: E300290s

Size: 100ug/200ul

**Source:**

Rabbit polyclonal RIPK2<sup>(1)</sup> antibody was raised against a 15 amino acid peptide from near the C terminal residues of human RIPK2. The peptide sequence: CKLKDNKQMGLQPYPE

**Species Reactivity:**

Human

Not yet tested in other species.

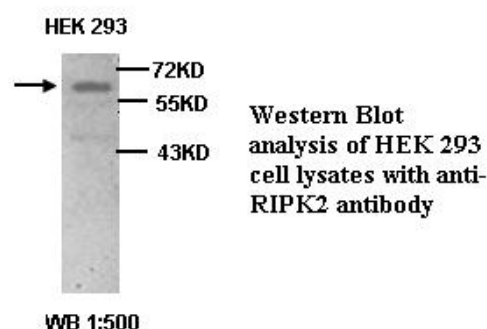
**Application:**

For research use only

Peptide ELISA titer: 1:40,000-1:80,000

Western blot analysis: 1:200-500

Optimal dilutions/concentrations should be determined by the end user.

**Dilution instruction and storage:**

Already reconstituted in 200ul sterile H<sub>2</sub>O. The antibody is stable for at least one year when stored at -20°C after reconstitution.

Avoid repeated freeze/thaw cycles.

**Reference:**

(1) McCarthy, J.V., Ni, J. and Dixit, V.M. RIP2 is a novel NF-kappaB-activating and cell death-inducing kinase. J Biol Chem. 1998;273(27):16968-75.

**For Research Use Only**