



SMARCB1 Antibody

E300293

Product description:

Formulation: Lyophilized protein A/G purified SMARCB1 antibody containing 0.02% NaN₃
Catalog No.: E300293
Size: 100ug
Antigen GeneBank No.: Q12824

Source:

Rabbit polyclonal SMARCB1 (1) antibody was raised against a 14 amino acid peptide from near the N terminal residues of human SMARCB1

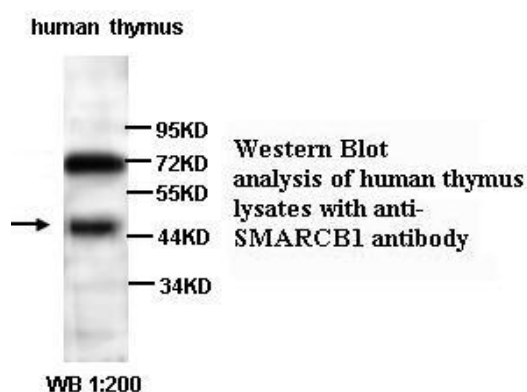
Species Reactivity:

Human

Not yet tested in other species.

Application:

For research use only
Peptide ELISA titer: 1:80,000
Western blot analysis: 1:200-1,000
Optimal dilutions/concentrations should be determined by the end use

**Dilution instruction and storage:**

Reconstitute in 200ul sterile H₂O.
The lyophilized antibody is stable for at least one year when store at -20°C after reconstitution.
Avoid repeated freeze/thaw cycles.

Reference:

(1) Sigauke, E., Rakheja, D., Maddox, D.L., Absence of expression of SMARCB1/INI1 in malignant rhabdoid tumors of the central nervous system, kidneys and soft tissue: an immunohistochemical study with implications for diagnosis. Modern pathology. 2006;19(5):717-725

For Research Use Only