



TRAP1 Antibody

E300319

Product description:

Formulation: Lyophilized rabbit anti-TRAP1 serum containing 0.02% NaN₃

Catalog No.: E300319

Size: 100ug/200ul

Source:

Rabbit polyclonal TRAP1⁽¹⁾ antibody was raised against a 15 amino acid peptide corresponding to N terminal residues of human TRAP1.

Species Reactivity:

Human

Not yet tested in other species.

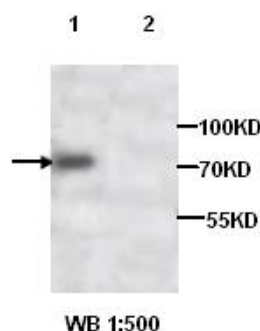
Application:

For research use only

Peptide ELISA titer: 1:160,000

Western blot analysis: 1:500-1:1,000

Optimal dilutions/concentrations should be determined by the end user.



Lane1: HepG2 cell lysates, No peptide blocked
Lane2: HepG2 cell lysates, Peptide blocked

Dilution instruction and storage:

Already reconstituted in 200ul sterile H₂O. The antibody is stable for at least one year when stored at -20°C after reconstitution.

Avoid repeated freeze/thaw cycles.

Reference:

(1)Felts,S.J.,Owen,B.A.,Nguyen,P.,et,al The hsp90-related protein TRAP1 is a mitochondrial protein with distinct functional properties. J Biol Chem, 2000;275(5): 3305-3312.

For Research Use Only