



NUDT6 antibody

E300331

Product description:

Formulation: Lyophilized anti-NUDT6 antibody purified by peptide affinity column containing 2% BSA and 0.02% NaN₃

Catalog No.:E300331

Size: 100ug/200ul

Source:

Rabbit polyclonal NUDT6 ⁽¹⁾ antibody was raised against a peptide from N terminal residues of human NUDT6 protein.

Species Reactivity:

Human

Not yet tested in other species.

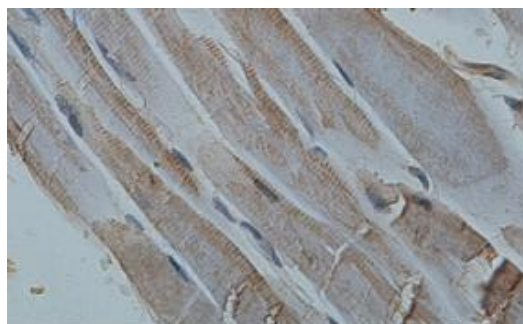
Application:

For research use only

Peptide ELISA titer: 1:10,000-1:40,000

Immunohistochemistry: 1:50-200

Optimal dilutions/concentrations should be determined by the end user.



Immunohistochemical staining of formalin-fixed paraffin-embedded fetal skeletal muscle showing cytoplasmic staining with anti-NUDT6 antibody at a dilution of 1/100

Dilution instruction and storage:

Already reconstituted in 200ul sterile H₂O. The antibody is stable for at least one year when stored at -20°C after reconstitution.

Avoid repeated freeze/thaw cycles.

Reference:

(1) Zhang,S.C., Barclay,C., Alexander,L.A., et al.Alternative splicing of the FGF antisense gene: differential subcellular localization in human tissues and esophageal adenocarcinoma.J. Mol. Med. 85 (11), 1215-1228 (2007)

For Research Use Only