



CNTF Antibody

E300382s

Product description:

Formulation: Lyophilized rabbit anti-TAN1/Notch1 serum containing 0.02% NaN₃.

Catalog No.: E300382s

Size: 100ug/200ul

Source:

Rabbit polyclonal TAN1/Notch1⁽¹⁾ antibody was raised against a peptide corresponding to the N-terminal sequence of the cleaved N intracellular domain (NICD).

Species Reactivity:

Human,Rat,Mus

Not yet tested in other species.

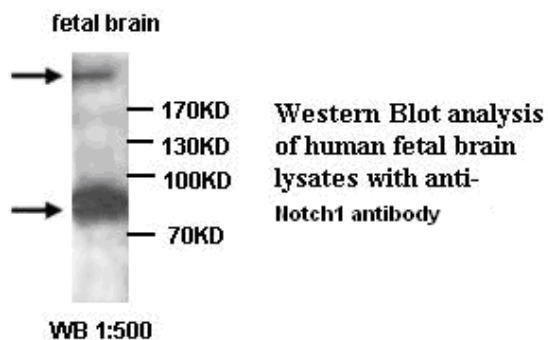
Application:

For research use only

Peptide ELISA titer: 1:160,000

Western blot analysis: 1:1,000-2,000

Optimal dilutions/concentrations should be determined by the end user.

**Dilution instruction and storage:**

Already reconstituted in 200ul sterile H₂O. The antibody is stable for at least one year when stored at -20°C after reconstitution.

Avoid repeated freeze/thaw cycles.

Reference:

(1) Lefort,K., Mandinova,A., Ostano,P., et al. Notch1 is a p53 target gene involved in human keratinocyte tumor suppression through negative regulation of ROCK1/2 and MRCKalpha kinases. Genes Dev. 2007;21(5):562-577.

For Research Use Only