



ADAM15 Antibody

E300388

ADAM15 full name: A disintegrin and metallopeptidase domain 15

Product description:

Formulation: Lyophilized anti-ADAM15 antibody serum containing 0.02% NaN₃.

Catalog No.: E300388

Size: 100ug/200ul

Source:

Rabbit polyclonal ADAM15⁽¹⁾ antibody was raised against a 14 amino acid peptide corresponding to the propeptide domain of human ADAM15 protein.

Species Reactivity:

Human

Not yet tested in other species.

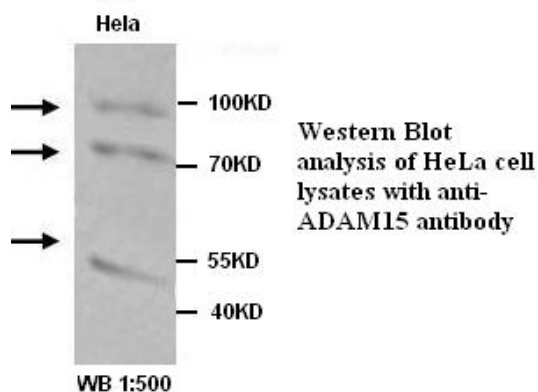
Application:

For research use only

Peptide ELISA titer: 1:160,000

Western blot analysis: 1:500-1,000

Optimal dilutions/concentrations should be determined by the end user.



Dilution instruction and storage:

Already reconstituted in 200ul sterile H₂O. The antibody is stable for at least one year when stored at -20°C after reconstitution.

Avoid repeated freeze/defrost cycles.

Reference:

(1) Kuefer, R., Day, K.C., Kleer, C.G., et al. ADAM15 disintegrin is associated with aggressive prostate and breast cancer disease. *Neoplasia* 2006;8 (4):319-329.

For Research Use Only