



ADAM15 Antibody

E300389

Product description:

Formulation: Lyophilized anti-ADAM15 antibody purified by peptide affinity column containing 2% BSA and 0.02% NaN_3

Catalog No.: E300389

Size: 100ug/200ul

Source:

Rabbit polyclonal ADAM15⁽¹⁾ antibody was raised against a peptide from near the C terminal residues of human ADAM15 protein.

Species Reactivity:

Human

Not yet tested in other species.

Application:

For research use only

Peptide ELISA titer: 1:80,000

Western blot analysis: 1:200-1,000

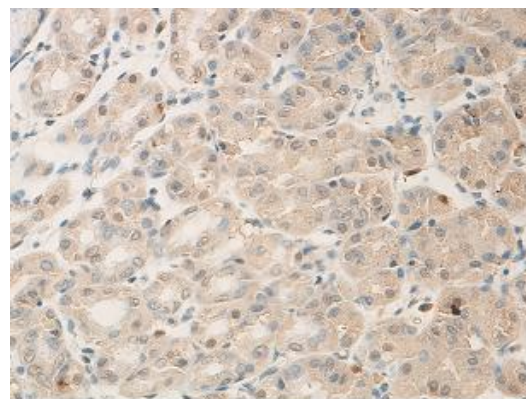
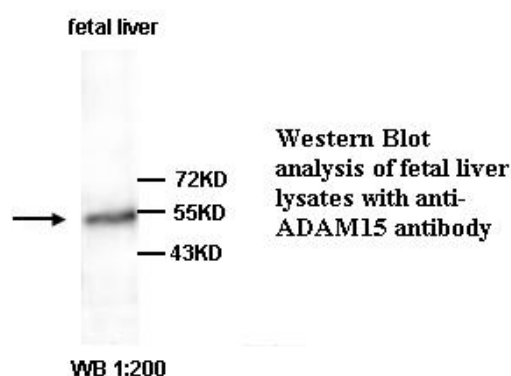
Immunohistochemistry: 1:100-500

Optimal dilutions/concentrations should be determined by the end user.

Dilution instruction and storage:

Already reconstituted in 200ul sterile H_2O . The antibody is stable for at least one year when stored at -20°C after reconstitution.

Avoid repeated freeze/thaw cycles.



Immunohistochemical staining of formalin-fixed paraffin-embedded Stomach showing membrane staining with anti-ADAM15 antibody dilution: 1:100.

Reference:

(1) Kuefer, R., Day, K.C., Kleer, C.G., et al. ADAM15 disintegrin is associated with aggressive prostate and breast cancer disease. Neoplasia 2006;8 (4):319-329.

For Research Use Only