



ADAM19 Antibody

E300390

Product description:

Formulation: Lyophilized protein A/G purified ADAM19 Antibody containing 0.02% NaN₃

Catalog No.: E300390

Size: 100ug/200ul

Source:

Rabbit polyclonal ADAM19⁽¹⁾ antibody was raised against a 15 amino acid peptide from near the N terminal residues of human ADAM19. The peptide sequence is: REPGWTSKGSEEGSC

Species Reactivity:

Human

Not yet tested in other species.

Application:

For research use only

Peptide ELISA titer: 1:10,000-1:40,000

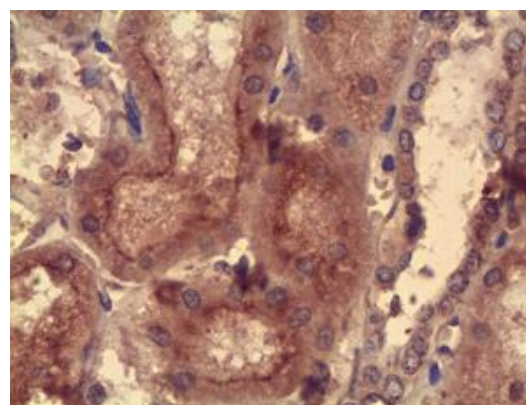
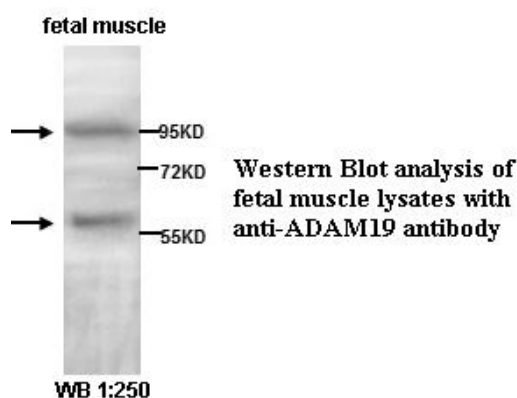
Western blot analysis: 1:200-1:500

Optimal dilutions/concentrations should be determined by the end user.

Dilution instruction and storage:

Already reconstituted in 200ul sterile H₂O. The antibody is stable for at least one year when stored at -20°C after reconstitution.

Avoid repeated freeze/thaw cycles.



Immunohistochemical staining of formalin-fixed paraffin-embedded kidney showing membrane staining with anti-ADAM19 antibody dilution: 1:200

Reference:

- (1) Kang, T., Zhao, Y. G., Pei, D et al. Intracellular activation of human adamalysin 19/disintegrin and metalloproteinase 19 by furin occurs via one of the two consecutive recognition sites. J. Biol. Chem., 2002;277(28): 25583-25591.

For Research Use Only