



## ADAM29 Antibody

E300393

**Product description:**

Formulation: Lyophilized rabbit anti-ADAM29 serum containing 0.02% NaN<sub>3</sub>.

Catalog No.: E300393

Size: 100ug/200ul

**Source:**

Rabbit polyclonal ADAM29<sup>(1)</sup> antibody was raised against a 15 amino acid peptide corresponding to the C terminus residues of human ADAM29.

**Species Reactivity:**

Human

Not yet tested in other species.

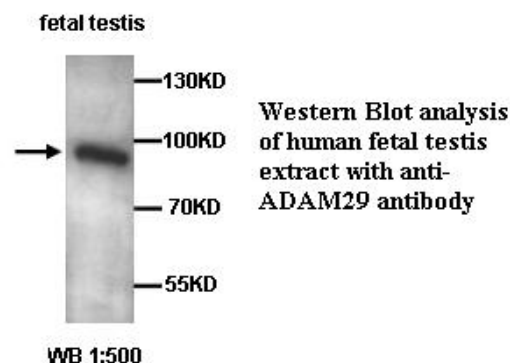
**Application:**

For research use only

Peptide ELISA titer: 1:160,000

Western blot analysis: 1:500-1,000

Optimal dilutions/concentrations should be determined by the end user.

**Dilution instruction and storage:**

Already reconstituted in 200ul sterile H<sub>2</sub>O. The antibody is stable for at least one year when stored at -20°C after reconstitution.

Avoid repeated freeze/thaw cycles.

**Reference:**

(1)Oppezzo,P.,Vasconcelos,Y.,Settegrana,C., et al. The LPL/ADAM29 expression ratio is a novel prognosis indicator in chronic lymphocytic leukemia. Blood.2005;106(2):650-657.

**For Research Use Only**