



Adiponectin Receptor 1 Antibody

E300406

Product description:

Formulation: Lyophilized rabbit anti-Adiponectin Receptor 1 serum containing 0.02% NaN_3

Catalog No.: E300406

Size: 100ug/200ul

Source:

Rabbit polyclonal Adiponectin Receptor 1⁽¹⁾ antibody was raised against a peptide corresponding to the C terminal residues of human ADR1. The peptide sequence: RYGLEGGCTDDTLL

Species Reactivity:

Human

Not yet tested in other species.

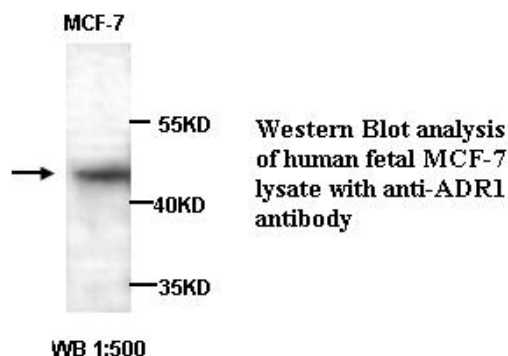
Application:

For research use only

Peptide ELISA titer: 1:10,000-1:80,000

Western blot analysis: 1:500-1:1,000

Optimal dilutions/concentrations should be determined by the end user.

**Dilution instruction and storage:**

Already reconstituted in 200ul sterile H_2O . The antibody is stable for at least one year when stored at -20°C after reconstitution.

Avoid repeated freeze/thaw cycles.

Reference:

(1) Satoh, J., Tabunoki, H., Yamamura, T., et al. TROY and LINGO-1 expression in astrocytes and macrophages/microglia in multiple sclerosis lesions. Neuropathol. Appl. Neurobiol. 2007;33 (1): 99-107.

For Research Use Only