



MAGI2 Antibody

E300421

Product description:

Formulation: Lyophilized rabbit anti-MAGI2 purified by protein A column containing 0.02% NaN₃

Catalog No.: E300421

Size: 100ug/200ul

Source:

Rabbit polyclonal MAGI2⁽¹⁾ antibody was raised against a 13 amino acid peptide corresponding to the C terminus residues of human MAGI2.

Species Reactivity:

Human, rat, mus

Not yet tested in other species.

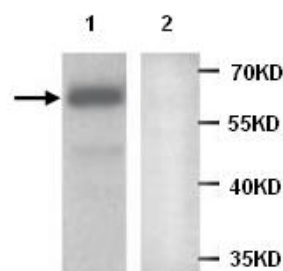
Application:

For research use only

Peptide ELISA titer: 1:1,000-1:10,000

Western blot analysis: 1:200-1:1,000

Optimal dilutions/concentrations should be determined by the end user.



WB 1:500

Lane1: Fetal brain, no peptide blocked.

Lane2: Fetal brain, peptide blocked.

Dilution instruction and storage:

Already reconstituted in 200ul sterile H₂O. The antibody is stable for at least one year when stored at -20°C after reconstitution.

Avoid repeated freeze/defrost cycles.

Reference:

(1) Franklin, J.L., Yoshiura, K., Dempsey, P.J., et al. Identification of MAGI-3 as a transforming growth factor-alpha tail binding protein. *Exp. Cell Res.* 2005;303 (2), 457-470.

For Research Use Only