



AKT2 antibody

E300436

Product description:

Formulation: Lyophilized anti-AKT2 antibody purified by peptide affinity column containing 1% BSA and 0.02% NaN_3

Catalog No.: E300436

Size: 100ug/200ul

Source:

Rabbit polyclonal AKT2 ⁽¹⁾ antibody was raised against a 17 amino acid peptide from N terminal residues of human AKT2 protein.

Species Reactivity:

Human

Not yet tested in other species.

Application:

For research use only

Peptide ELISA titer: 1:1,000-1:10,000

Western blot analysis: 1:200-1,000

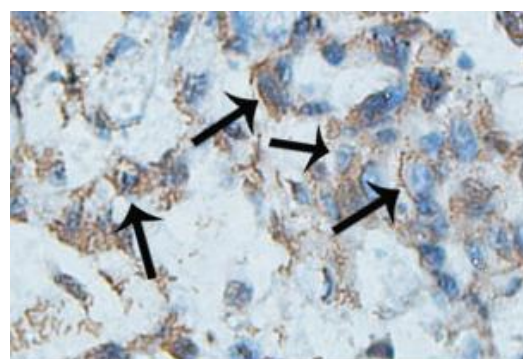
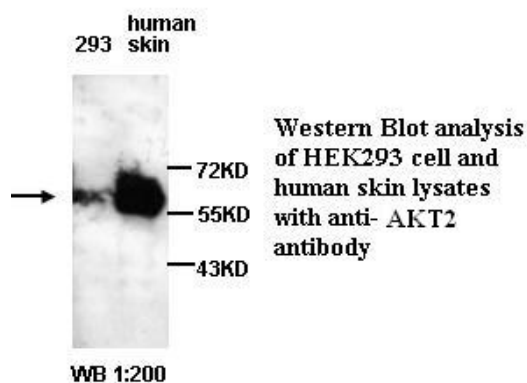
Immunohistochemistry: 1:50-200

Optimal dilutions/concentrations should be determined by the end user.

Dilution instruction and storage:

Already reconstituted in 200ul sterile H_2O . The antibody is stable for at least one year when stored at -20°C after reconstitution.

Avoid repeated freeze/defrost cycles.



Immunohistochemical staining of formalin-fixed paraffin-embedded lung carcinoma showing Cytoplasmic staining with anti-AKT2 antibody at a dilution of 1/100.

Reference:

(1) Cheng,G.Z., Chan,J., Wang,Q., et al. Twist transcriptionally up-regulates AKT2 in breast cancer cells leading to increased migration, invasion, and resistance to Paclitaxel. Cancer Res. 2007;67 (5), 1979-1987 .

For Research Use Only