



AKT1 Antibody

E300438

Product description:

Formulation: Lyophilized anti-AKT1 antibody purified by peptide affinity column containing 2% BSA and 0.02% NaN_3

Catalog No.: E300438

Size: 100ug/200ul

Source:

Rabbit polyclonal AKT1⁽¹⁾ antibody was raised against a 15 amino acid peptide corresponding to internal residues of human AKT1 protein.

Species Reactivity:

Human, mus, rat.

Not yet tested in other species.

Application:

For research use only

Peptide ELISA titer: 1:10,000-1:40,000

Western blot analysis: 1:200-1,000

Immunohistochemistry: 1:100-500

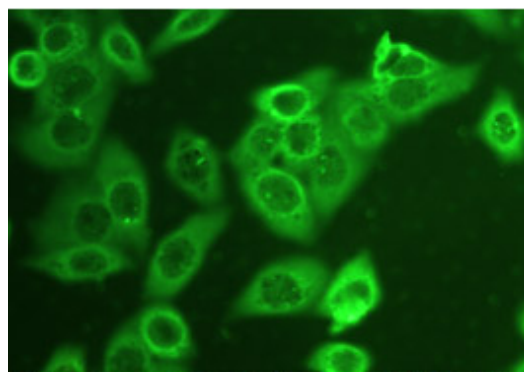
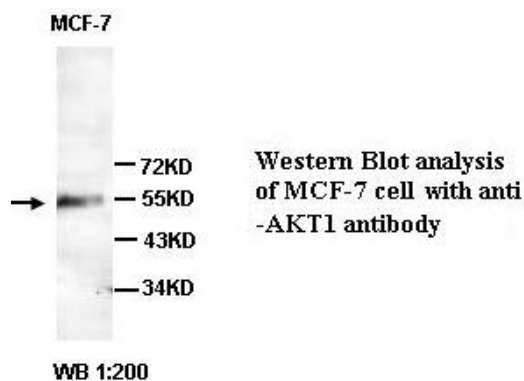
Immunofluorescence: 1:100-1:200

Optimal dilutions/concentrations should be determined by the end user.

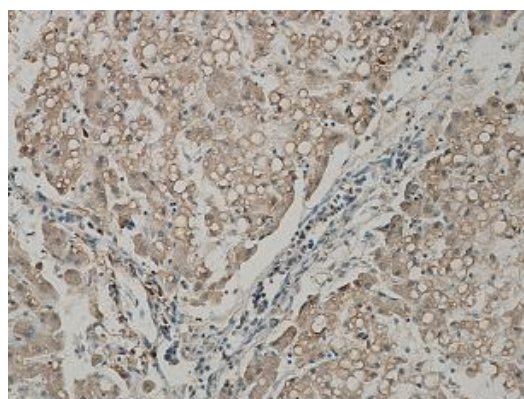
Dilution instruction and storage:

Already reconstituted in 200ul sterile H_2O . The antibody is stable for at least one year when stored at -20°C after reconstitution.

Avoid repeated freeze/defrost cycles.



Immunofluorescence:
HeLa cells 1: 50



Immunohistochemical staining of formalin-fixed paraffin-embedded liver showing cytoplasmic and nuclear staining with anti-AKT1 antibody dilution: 1:100.

For Research Use Only