



## RAN Antibody

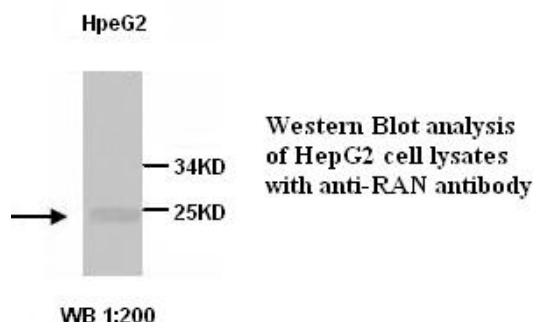
E300449

**Product description:**

Formulation: Lyophilized anti-RAN antibody purified by protein A column containing 0.02% NaN<sub>3</sub>

Catalog No.:E300449

Size: 100ug/200ul

**Source:**

Rabbit polyclonal RAN<sup>(1)</sup> antibody was raised against a 14 amino acid peptide from N terminal residues of human RAN protein. The peptide sequence: AAQGEPQVQFKLVC.

**Species Reactivity:**

Human, mus, rat, chicken, dog, xenopus laevis.

Not yet tested in other species.

**Application:**

For research use only

Peptide ELISA titer: 1:10,000-40,000

Western blot analysis: 1:200-500

Optimal dilutions/concentrations should be determined by the end user.

**Dilution instruction and storage:**

Already reconstituted in 200ul sterile H<sub>2</sub>O. The antibody is stable for at least one year when stored at -20°C after reconstitution.

Avoid repeated freeze/thaw cycles.

**Reference:**

(1) Drivas,GT., Shih,A., Coutavas,E., et,al Characterization of four novel ras-like genes expressed in a human teratocarcinoma cell line. Mol Cell Biol. 1990;10(4):1793-8.

**For Research Use Only**