



EpCAM Antibody

E300452

Product description:

Formulation: Lyophilized EpCAM antibody purified by peptide affinity column containing 2% BSA and 0.02% NaN₃

Catalog No.: E300452

Size: 100ug/200ul

Source:

Rabbit polyclonal EpCAM ⁽¹⁾ antibody was raised against a peptide from a peptide from near the C terminal residues of human EpCAM protein.

Species Reactivity:

Human

Not yet tested in other species.

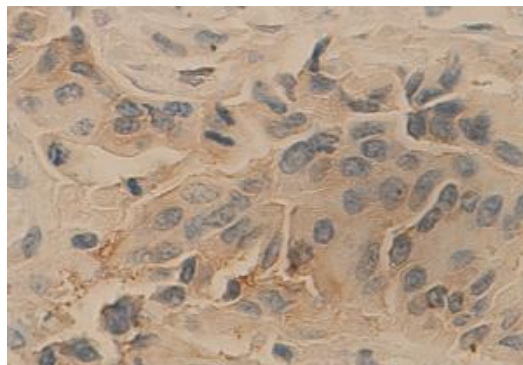
Application:

For research use only

Peptide ELISA titer: 1:1,000-1:10,000

Immunohistochemistry: 1:50-500

Optimal dilutions/concentrations should be determined by the end user.



Immunohistochemical staining of formalin-fixed paraffin-embedded colon carcinoma showing membrane staining with anti-EpCAM antibody dilution: 1:100.

Dilution instruction and storage:

Already reconstituted in 200ul sterile H₂O. The antibody is stable for at least one year when stored at -20°C after reconstitution.

Avoid repeated freeze/thaw cycles.

Reference:

(1) Maaser, K. and Borlak, J. A genome-wide expression analysis identifies a network of EpCAM-induced cell cycle regulators. *Br. J. Cancer* 99 (10), 1635-1643 (2008)

For Research Use Only