



## Cyclin D1 Antibody

E300456

**Product description:**

Formulation: Lyophilized anti-CyclinD1 antibody purified by peptide affinity column containing 1% BSA and 0.02% NaN<sub>3</sub>

Catalog No.: E300456

Size: 100ug/200ul

**Source:**

Rabbit polyclonal Cyclin D1<sup>(1)</sup> antibody was raised against a 12 amino acid peptide from the C terminal residues of human Cyclin D1 protein.

**Species Reactivity:**

Human,mus,,rat

Not yet tested in other species.

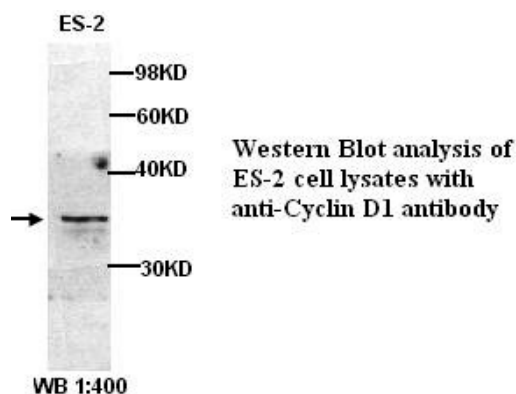
**Application:**

For research use only

Peptide ELISA titer: 1:20,000-1:80,000

Western blot analysis: 1:200-500

Optimal dilutions/concentrations should be determined by the end user.

**Dilution instruction and storage:**

Already reconstituted in 200ul sterile H<sub>2</sub>O. The antibody is stable for at least one year when stored at -20°C after reconstitution.

Avoid repeated freeze/thaw cycles.

**Reference:**

(1) Vijayalakshmi,N., Selvaluxmi,G, Majhi, U et.al. Alterations found in p16/Rb/cyclin D1 pathway in the dysplastic and malignant cervical epithelium. Oncol.Res. 2007 :16 (11):527-533.

**For Research Use Only**