



## Amyloid beta precursor Antibody

E300488

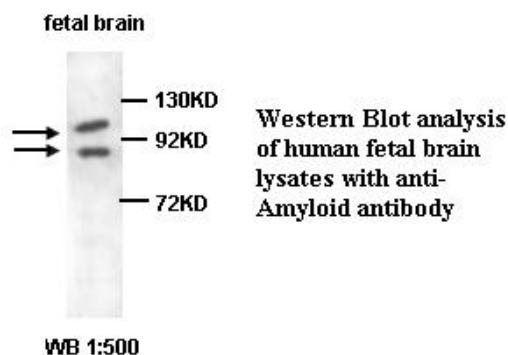
**Product description:**

Formulation: Lyophilized rabbit anti-Amyloid beta precursor serum containing 0.02% NaN<sub>3</sub>

Catalog No.: E300488

Size: 100ug

Antigen GeneBank No.: P05067

**Source:**

Rabbit polyclonal Amyloid beta precursor protein<sup>(1)</sup> antibody was raised against a 14 amino acid peptide from the C terminal residues of human Amyloid beta precursor protein

**Species Reactivity:**

Human, rat, mus

Not yet tested in other species.

**Dilution instruction and storage:**

Reconstitute in 200ul sterile H<sub>2</sub>O.

The lyophilized antibody is stable for at least one year when stored at -20°C after reconstitution.

Avoid repeated freeze/thaw cycles.

**Application:**

For research use only

Peptide ELISA titer: 1:40,000-1:80,000

Western blot analysis: 1:200-1,000

Optimal dilutions/concentrations should be determined by the end use

**Reference:**

(1)Kang,J.,Lemaire,H.G,Unterbeck,A.,et,al

The precursor of Alzheimer's disease amyloid A4 protein resembles a cell-surface receptor.

Nature.1987;325:733-736.

**For Research Use Only**