



## ACE2 Antibody

E300497

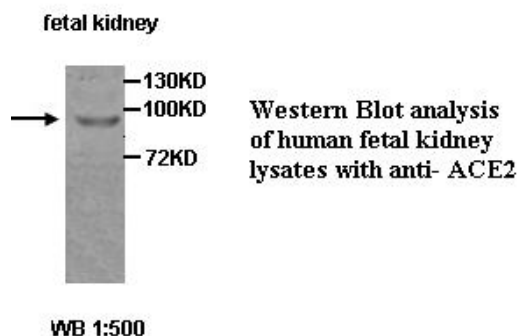
**Product description:**

Formulation: Lyophilized protein A purified ACE2 Antibody containing 0.5% BSA and 0.02% NaN<sub>3</sub>

Catalog No.: E300497

Size: 100ug

Antigen GeneBank No.: Q9BYF1

**Source:**

Rabbit polyclonal ACE2<sup>(1)</sup> antibody was raised against a 15 amino acid peptide from the internal residues of human ACE2

**Species Reactivity:**

Human

Not yet tested in other species.

**Dilution instruction and storage:**

Reconstitute in 200ul sterile H<sub>2</sub>O.

The lyophilized antibody is stable for at least one year when stored at -20°C after reconstitution.

Avoid repeated freeze/thaw cycles.

**Application:**

For research use only

Peptide ELISA titer: 1:80,000

Western blot analysis: 1:200-1,000

Optimal dilutions/concentrations should be determined by the end use

**Reference:**

(1)Tipnis,S.R., Hooper,N.M., Hyde,R.,et,al. A human homolog of angiotensin-converting enzyme. Cloning and functional expression as a captopril-insensitive carboxypeptidase. J Biol Chem. 2000;275(43):33238-43

**For Research Use Only**