



ACE2 Antibody

E300498

Product description:

Formulation: Lyophilized anti-ACE2 antibody purified by peptide affinity column containing 2% BSA and 0.02% NaN₃

Catalog No.: E300498

Size: 100ug/200ul

Source:

Rabbit polyclonal ACE2⁽¹⁾ antibody was raised against a peptide corresponding to the N terminal residues of human ACE2 protein.

Species Reactivity:

Human

Not yet tested in other species.

Application:

For research use only

Peptide ELISA titer: 1:5,000-1:20,000

Western blot analysis: 1:500-1,000

Immunohistochemistry: 1:100-500

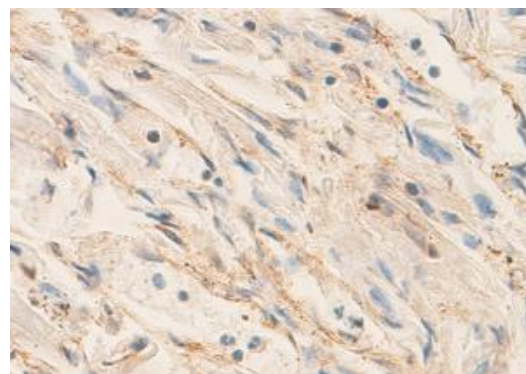
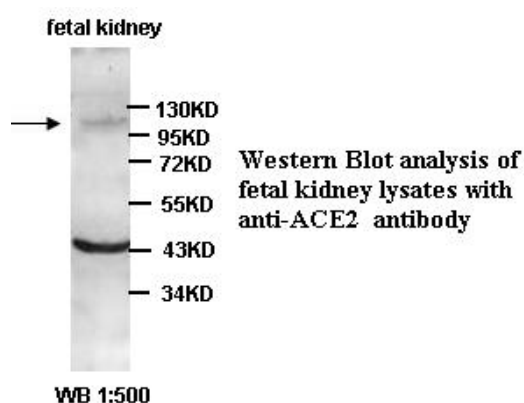
Optimal dilutions/concentrations should be determined by the end user.

Dilution instruction and storage:

Already reconstituted in 200ul sterile H₂O. The antibody is stable for at least one year when stored at -20°C after

reconstitution.

Avoid repeated freeze/thaw cycles.



Immunohistochemical staining of formalin-fixed paraffin-embedded fetal heart showing membrane staining with anti-ACE2 antibody dilution: 1:100.

Reference:

(1) Douglas, G.C., O'Bryan, M.K., Hedger, M.P., et al. The novel angiotensin-converting enzyme (ACE) homolog, ACE2, is selectively expressed by adult Leydig cells of the testis. Endocrinology 145 (10), 4703-4711 (2004).

For Research Use Only